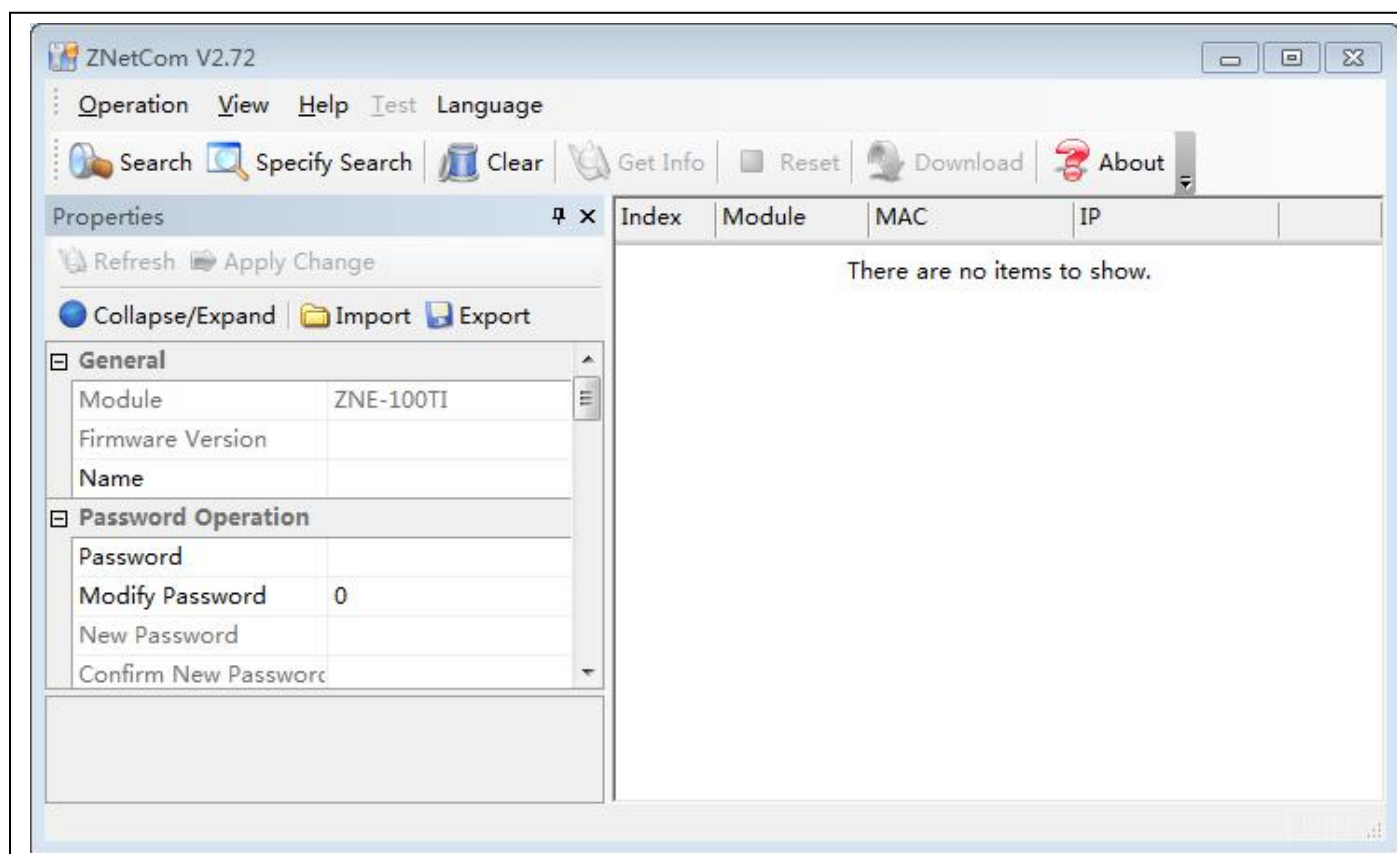


# 16x16 HDMI Matrix IP Address Setting Steps

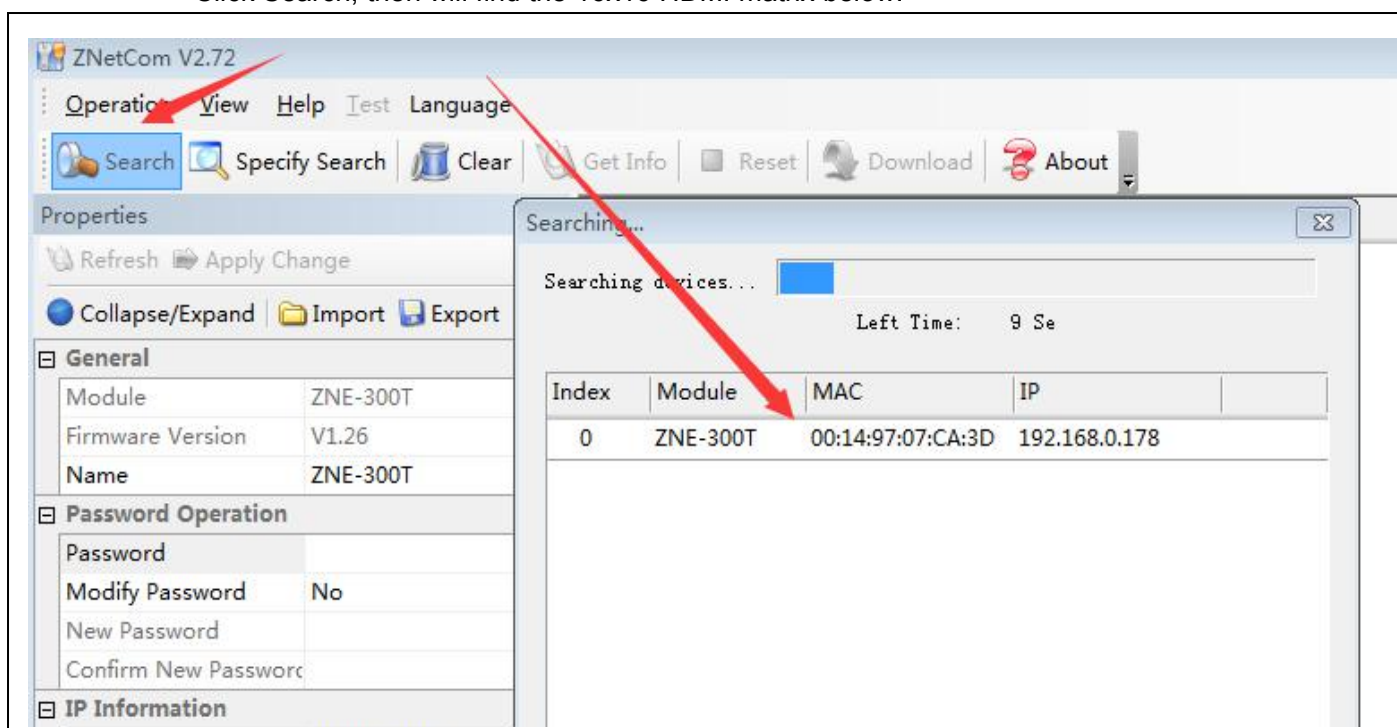
\* Before Setting the IP, users need to well get the 16x16 HDMI matrix well connected with the control PC by the LAN cable

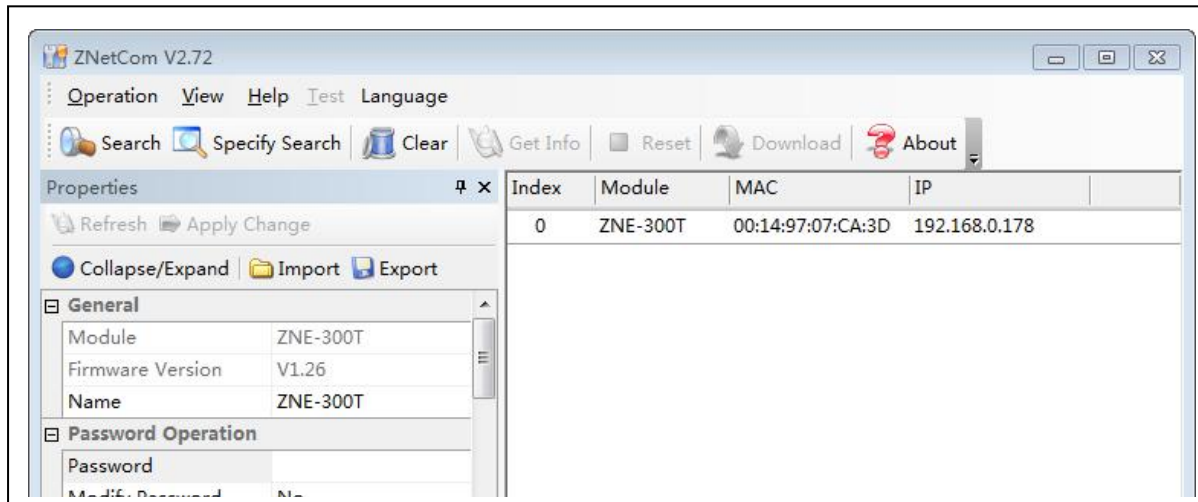
## 1. Configuration for the LAN Port:

Open the ZNetCom2 software, showing as below:

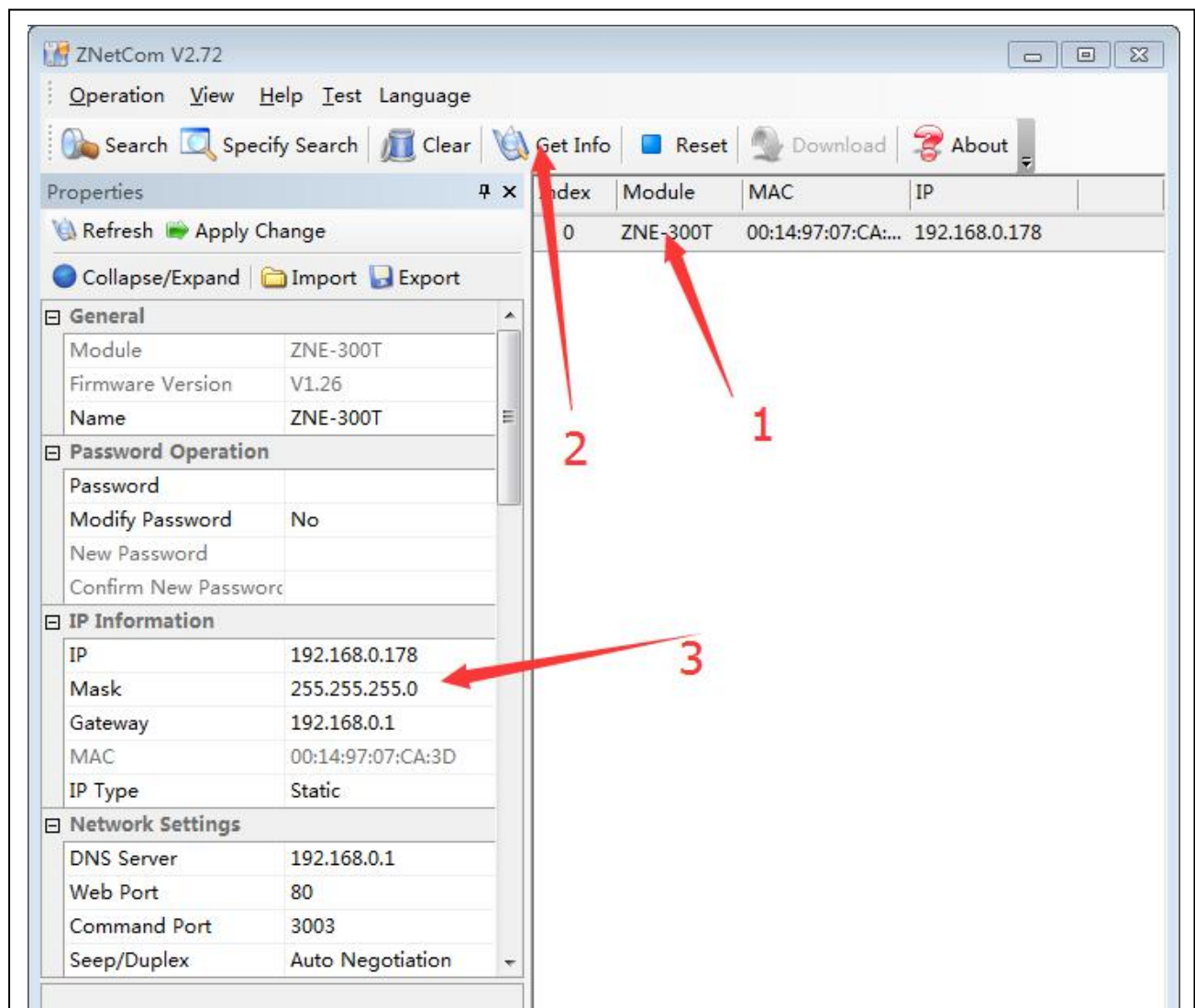


Click Search, then will find the 16x16 HDMI matrix below:





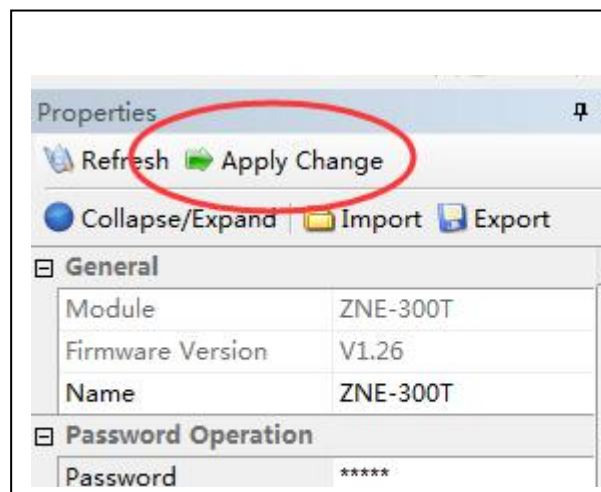
After found out the equipment, need to: Click “ZNE-300T” first and then click “Get Info”, then the configuration for the matrix will be showing on the left side of the control interface.



If need to change the settings, will need to enter the password **88888** first.



After changing the parameter, will need to click “Apply Change”



Below are the default parameters:

1. Work Type: TCP Server
2. Work Port: 15000
3. Baudrate: 115200
4. Data Bits: 8
5. Stop Bits: 1
6. TCP Connection: 4.
7. IP: 192.168.0.178

|                           |                          |
|---------------------------|--------------------------|
| <b>General</b>            |                          |
| Module                    | ZNE-300T                 |
| Firmware Version          | V1.26                    |
| Name                      | ZNE-300T                 |
| <b>Password Operation</b> |                          |
| Password                  |                          |
| Modify Password           | No                       |
| New Password              |                          |
| Confirm New Password      |                          |
| <b>IP Information</b>     |                          |
| IP                        | 192.168.0.178            |
| Mask                      | 255.255.255.0            |
| Gateway                   | 192.168.0.1              |
| MAC                       | 00:14:97:07:CA:3D        |
| IP Type                   | Static                   |
| <b>Network Settings</b>   |                          |
| DNS Server                | 192.168.0.1              |
| Web Port                  | 80                       |
| Command Port              | 3003                     |
| Seep/Duplex               | Auto Negotiation         |
| IP Filter 1               | <input type="checkbox"/> |
| IP Filter 2               | <input type="checkbox"/> |
| IP Filter 3               | <input type="checkbox"/> |

|                                    |                          |
|------------------------------------|--------------------------|
| <b>COM1 Settings</b>               |                          |
| Set the other COMs same with this. |                          |
| Work Type                          | TCP Server               |
| Work Port                          | 15000                    |
| Timeout to Disconnect              | 6000                     |
| TCP Alive Check Times              | 20                       |
| The First Byte of a Frame          | <input type="checkbox"/> |
| The Last Byte of a Frame           | <input type="checkbox"/> |
| Baudrate                           | 115200                   |
| Data Bits                          | 8                        |
| Stop Bits                          | 1                        |
| Parity                             | None                     |
| Frame Length                       | 500                      |
| Frame Interval(ms)                 | 50                       |
| Clear COM Buffer                   | Never                    |
| TCP Turbo                          | Disable                  |
| TCP Disconnect                     | Keep Connection          |
| TCP Connection Password            | None                     |
| TCP Connection Info                | None                     |
| TCP Connection Condition           | None                     |
| TCP Connection Count               | 4                        |
| Target Port 1                      | 6001                     |
| Target IP 1                        | 0.0.0.0                  |
| <b>Timeout to Disconnect</b>       |                          |
| 10ms per unit, from 0 to 60000     |                          |